

EVIO Labs Portland
 14775 SW 74th Ave, Tigard, OR 97224
 503-954-2562 / OLCC 010-10046111391 / www.EVIOLabs.com

Full Spectrum Softgels 25mg Real Relief



Confident Cannabis ID: 2005ELP0011.1593

Sample ID: P200397-01

Matrix: Cannabinoid Product (solid)

METRC Batch #:

Sampling Method/SOP: Client

Date Sampled: NA

Date Accepted: 05/04/20

Harvest/Process Lot ID:

Batch ID: Lot#0126-1

Batch Size (g):

Unit for Sale: 1 capsule

Harvest/Production Date:



Cannabinoid Analysis

FOR INFORMATIONAL USE ONLY - NOT FOR REGULATORY PURPOSES

Date/Time Extracted: 05/05/20 15:21

Analysis Method/SOP: SOP.T.40.023

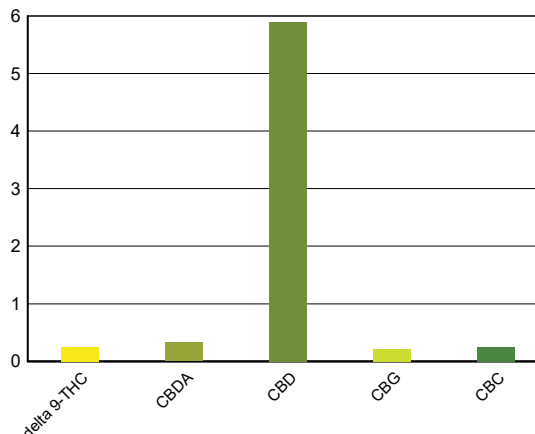
Date/Time Analyzed: 05/06/20 11:00

Sample mass: 0.425g/ 1 capsule

Cannabinoids	LOQ(%)	mg/g	mg/unit	Cannabinoid Profile
--------------	--------	------	---------	---------------------

Total THC ((THCA*0.877)+Δ9THC)		2.49	1.06
Total CBD ((CBDA*0.877)+CBD)		61.84	26.3

THCA	0.005	< LOQ	< LOQ
delta 9-THC	0.005	2.49	1.06
delta 8-THC	0.005	< LOQ	< LOQ
THCV	0.005	< LOQ	< LOQ
CBGA	0.005	< LOQ	< LOQ
CBDA	0.005	3.24	1.38
CBD	0.005	59.00	25.1
CBDV	0.005	< LOQ	< LOQ
CBN	0.005	< LOQ	< LOQ
CBG	0.005	2.08	0.884
CBC	0.005	2.56	1.09
THCV-A	0.005	< LOQ	< LOQ
CBDV-A	0.005	< LOQ	< LOQ
Sum of tested Cannabinoids	0.005	69.30	29.5



0.249% Total THC
6.184% Total CBD

29.5mg Cannabinoids Per Softgel
26.3mg CBD Per Softgel

"Total THC" and "Total CBD" are calculated values and are an Oregon reporting requirement (OAR 333-064-0100). For Cannabinoid analysis, only delta 9-THC, THCA, CBD, CBDA are ORELAP accredited analytes. Cannabinoid values reported for plant matter are dry weight corrected; Oregon Water Activity action level is 0.65Aw and Oregon Moisture Content action level is 15%, Samples above limit will be highlighted RED; FD = Field Duplicate; LOQ = Limit of Quantitation.

Kawai Medeiros
 Laboratory Manager - 5/8/2020

EVIO Labs Portland
 14775 SW 74th Ave, Tigard, OR 97224
 503-954-2562 / OLCC 010-10046111391 / www.EVIOLabs.com



FOR INFORMATIONAL USE ONLY - NOT FOR REGULATORY PURPOSES

Full Spectrum Softgels 25mg

CBD Hemp Experts

Sample ID: P200397-01 METRC Batch #:
 Matrix: Cannabinoid Product

Date Sampled: NA
 Date Accepted: 05/04/20
 Batch ID:
 Batch Size:
 Sampling Method/SOP: Client

Terpene Analysis

Date/Time Extracted: 05/05/20 14:14

Analysis Method/SOP: SOP.T.40.092

Date/Time Analyzed: 05/06/20 11:04

Analyte	LOQ (mg/g)	Mass (mg/g)	Mass (%)	Analyte	LOQ (%)	Mass (mg/g)	Mass (%)
alpha-Pinene	0.020	< LOQ	< LOQ	beta-Pinene	0.020	< LOQ	< LOQ
Camphene	0.020	< LOQ	< LOQ	Sabinene	0.020	< LOQ	< LOQ
Sabinene hydrate	0.020	< LOQ	< LOQ	beta-Myrcene	0.020	< LOQ	< LOQ
p-Mentha-1,5-diene	0.020	< LOQ	< LOQ	(+)-3-Carene	0.020	< LOQ	< LOQ
alpha-Terpinene	0.020	< LOQ	< LOQ	gamma-Terpinene	0.020	< LOQ	< LOQ
Limonene	0.020	< LOQ	< LOQ	Eucalyptol	0.020	< LOQ	< LOQ
Guaiol	0.020	0.152	0.0152	Terpinolene	0.020	< LOQ	< LOQ
Linalool	0.020	< LOQ	< LOQ	Camphor	0.020	< LOQ	< LOQ
(+)-Camphor	0.020	< LOQ	< LOQ	(-)-Camphor	0.020	< LOQ	< LOQ
Isopulegol	0.020	< LOQ	< LOQ	Isoborneol	0.020	< LOQ	< LOQ
Borneol	0.020	0.027	0.0027	Hexahydrothymol	0.020	< LOQ	< LOQ
Geraniol	0.020	< LOQ	< LOQ	(+)-Pulegone	0.020	< LOQ	< LOQ
Nerol	0.020	< LOQ	< LOQ	cis-Nerolidol	0.020	< LOQ	< LOQ
trans-Nerolidol	0.020	0.072	0.0072	Geranyl acetate	0.020	< LOQ	< LOQ
alpha-Cedrene	0.020	< LOQ	< LOQ	trans-Caryophyllene	0.020	0.047	0.0047
Caryophyllene Oxide	0.020	0.051	0.0051	alpha-Humulene	0.020	0.031	0.0031
Valencene	0.020	< LOQ	< LOQ	alpha-Farnesene	0.020	< LOQ	< LOQ
beta-Farnesene	0.020	< LOQ	< LOQ	Cedrol	0.020	< LOQ	< LOQ
alpha-Bisabolol	0.020	< LOQ	< LOQ	Fenchone	0.020	< LOQ	< LOQ
Fenchyl Alcohol	0.020	< LOQ	< LOQ	trans, beta- Ocimene	0.020	< LOQ	< LOQ
beta, cis- Ocimene	0.020	< LOQ	< LOQ	Terpineol	0.020	< LOQ	< LOQ
Total (Sum):						0.38	0.04

Analysis performed on GCMS with confirmation ion identification. Terpene analysis is not ORELAP accredited.
 Results reported as wet weight, or as is. LOQ = Limit of Quantitation.



Kawai Medeiros
 Laboratory Manager - 5/8/2020

EVIO Labs Portland
 14775 SW 74th Ave, Tigard, OR 97224
 503-954-2562 / OLCC 010-10046111391 / www.EVIOLabs.com



Quality Control

Batch: P20E013 - SOP.T.40.092 PDX Terpenoid Analysis via GC-MS

Blank(P20E013-BLK1)			Extracted: 05/05/20 14:14		Analyzed: 05/06/20 11:04		
Analyte	Result	LOQ	Recovery Limits	Analyte	Result	LOQ	Recovery Limits
alpha-Pinene	< LOQ	0.400 (mg/g)	< LOQ	beta-Pinene	< LOQ	0.400 (mg/g)	< LOQ
Camphene	< LOQ	0.400 (mg/g)	< LOQ	Sabinene	< LOQ	0.400 (mg/g)	< LOQ
Sabinene hydrate	< LOQ	0.400 (mg/g)	< LOQ	beta-Myrcene	< LOQ	0.400 (mg/g)	< LOQ
p-Mentha-1,5-diene	< LOQ	0.400 (mg/g)	< LOQ	(+)-3-Carene	< LOQ	0.400 (mg/g)	< LOQ
alpha-Terpinene	< LOQ	0.400 (mg/g)	< LOQ	gamma-Terpinene	< LOQ	0.400 (mg/g)	< LOQ
Limonene	< LOQ	0.400 (mg/g)	< LOQ	Eucalyptol	< LOQ	0.400 (mg/g)	< LOQ
Guaiol	< LOQ	0.400 (mg/g)	< LOQ	Terpinolene	< LOQ	0.400 (mg/g)	< LOQ
Linalool	< LOQ	0.400 (mg/g)	< LOQ	Camphor	< LOQ	0.400 (mg/g)	< LOQ
(+)-Camphor	< LOQ	0.400 (mg/g)	< LOQ	(-)-Camphor	< LOQ	0.400 (mg/g)	< LOQ
Isopulegol	< LOQ	0.400 (mg/g)	< LOQ	Isoborneol	< LOQ	0.400 (mg/g)	< LOQ
Borneol	< LOQ	0.400 (mg/g)	< LOQ	Hexahydrothymol	< LOQ	0.400 (mg/g)	< LOQ
Geraniol	< LOQ	0.400 (mg/g)	< LOQ	(+)-Pulegone	< LOQ	0.400 (mg/g)	< LOQ
Nerol	< LOQ	0.400 (mg/g)	< LOQ	cis-Nerolidol	< LOQ	0.400 (mg/g)	< LOQ
trans-Nerolidol	< LOQ	0.400 (mg/g)	< LOQ	Geranyl acetate	< LOQ	0.400 (mg/g)	< LOQ
alpha-Cedrene	< LOQ	0.400 (mg/g)	< LOQ	trans-Caryophyllene	< LOQ	0.400 (mg/g)	< LOQ
Caryophyllene Oxide	< LOQ	0.400 (mg/g)	< LOQ	alpha-Humulene	< LOQ	0.400 (mg/g)	< LOQ
Valencene	< LOQ	0.400 (mg/g)	< LOQ	alpha-Farnesene	< LOQ	0.400 (mg/g)	< LOQ
beta-Farnesene	< LOQ	0.400 (mg/g)	< LOQ	Cedrol	< LOQ	0.400 (mg/g)	< LOQ
alpha-Bisabolol	< LOQ	0.400 (mg/g)	< LOQ	Fenchone	< LOQ	0.400 (mg/g)	< LOQ
Fenchyl Alcohol	< LOQ	0.400 (mg/g)	< LOQ	trans, beta- Ocimene	< LOQ	0.400 (mg/g)	< LOQ
beta, cis- Ocimene	< LOQ	0.400 (mg/g)	< LOQ	Terpineol	< LOQ	0.400 (mg/g)	< LOQ

Batch: P20E023 - SOP.T.30.050PDX Prep for Cannabinoids

Blank(P20E023-BLK1)			Extracted: 05/05/20 15:21		Analyzed: 05/06/20 11:00		
Analyte	Result	LOQ	Recovery Limits	Analyte	Result	LOQ	Recovery Limits
THCA	< LOQ	0.005 (%)	< LOQ	delta 9-THC	< LOQ	0.005 (%)	< LOQ
delta 8-THC	< LOQ	0.005 (%)	< LOQ	THCV-A	< LOQ	0.005 (%)	< LOQ
THCV	< LOQ	0.005 (%)	< LOQ	CBDA	< LOQ	0.005 (%)	< LOQ
CBD	< LOQ	0.005 (%)	< LOQ	CBDV-A	< LOQ	0.005 (%)	< LOQ
CBDV	< LOQ	0.005 (%)	< LOQ	CBG	< LOQ	0.005 (%)	< LOQ
CBGA	< LOQ	0.005 (%)	< LOQ	CBN	< LOQ	0.005 (%)	< LOQ
CBC	< LOQ	0.005 (%)	< LOQ	Sum of tested Cannabinoid:	< LOQ	0.005 (%)	< LOQ



Kawai Medeiros
Laboratory Manager - 5/8/2020